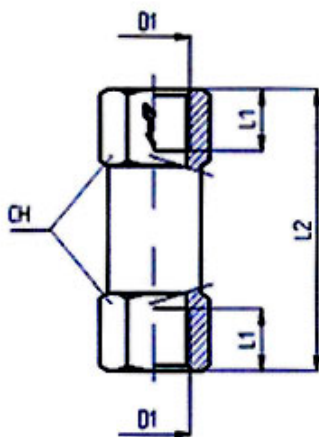


- Straight-way type, compact series -

Material: Nickel-plated brass
 Seal: NBR
 Spring: Stainless steel AISI 302

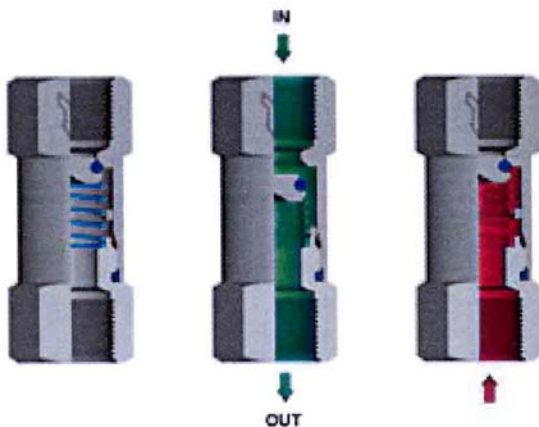
Opening pressure: Min. 0.2 bar
 Operating pressure: 2.0 to 10.0 bar
 Operating temperature: -10 °C to +70 °C
 Port: M thread acc. to DIN 13 (228.00)
 G thread acc. to DIN EN ISO 228-1 (228.01 to 228.04)



228.02

Unidirectional valves

| Art. No. | Ident No. | D1 | D2 | L1 | L2 | CH | Weight gr. |
|----------|-----------|-------|------|------|------|----|------------|
| 228.00 | 103840 | M5 | 2.5 | 5.0 | 25.0 | 8 | 8.0 |
| 228.01 | 103841 | G 1/8 | 5.0 | 8.0 | 36.5 | 13 | 25.0 |
| 228.02 | 103842 | G 1/4 | 7.0 | 9.0 | 42.5 | 16 | 41.0 |
| 228.03 | 103843 | G 3/8 | 10.0 | 10.5 | 51.0 | 20 | 73.0 |
| 228.04 | 103844 | G 1/2 | 12.0 | 12.5 | 62.0 | 24 | 120.0 |



The flow is allowed only one side. Generally the direction according to the on the check valve body identified arrow. The other side remains locked.

Application range:
 Pneumatic with filtered or oiled compressed air.